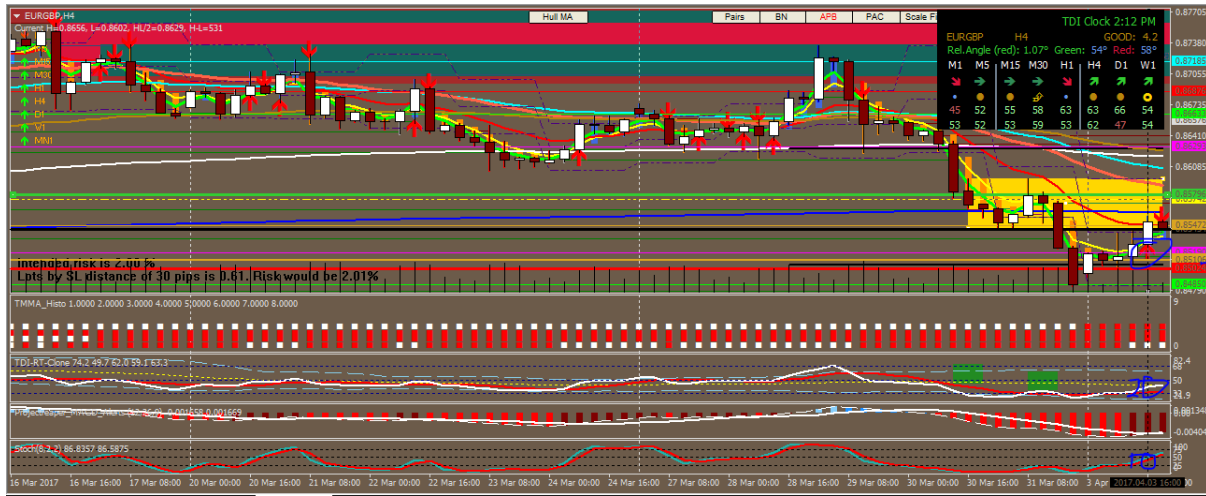
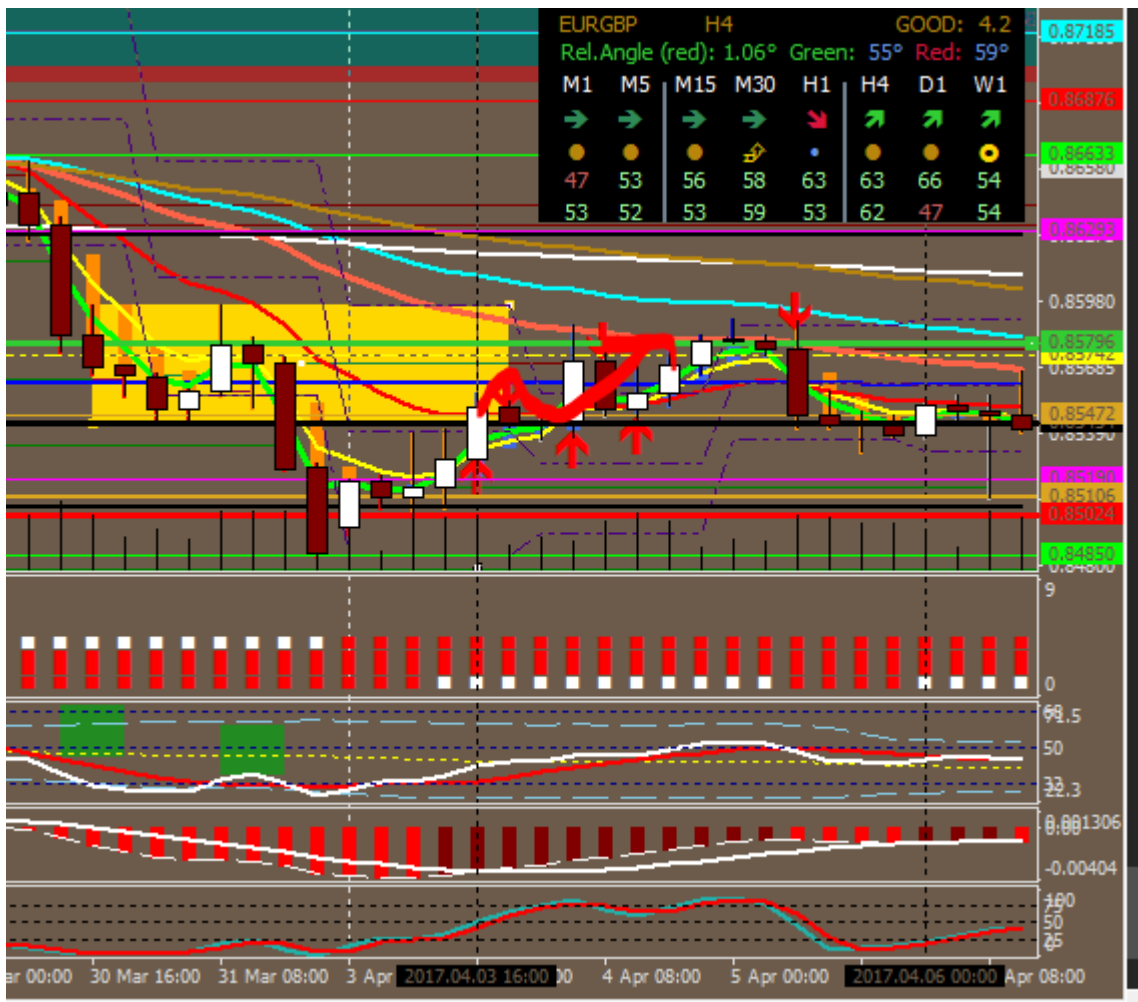


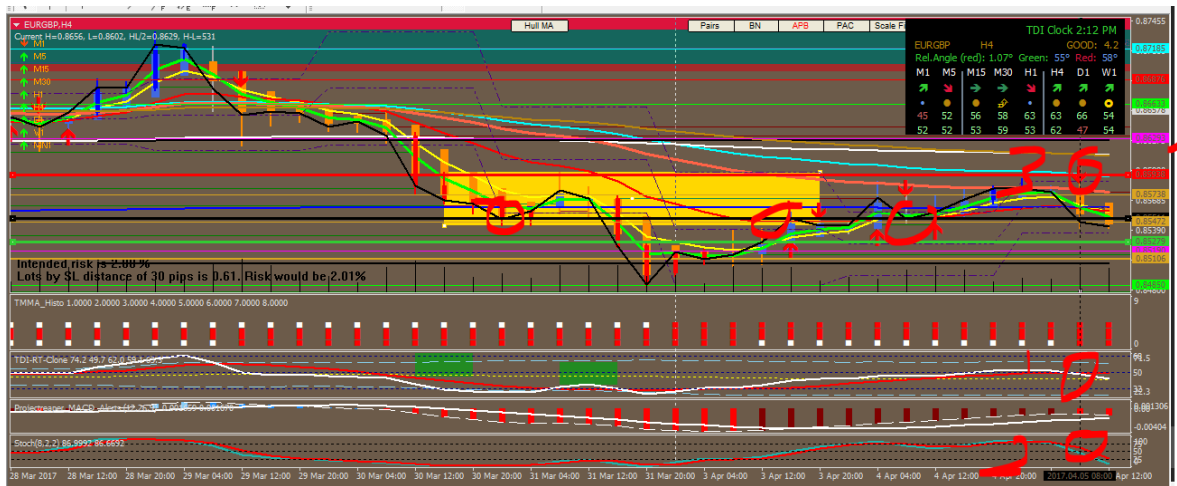
25/5 /17 - Paper trading Black=Entry Green=TP Red=SL



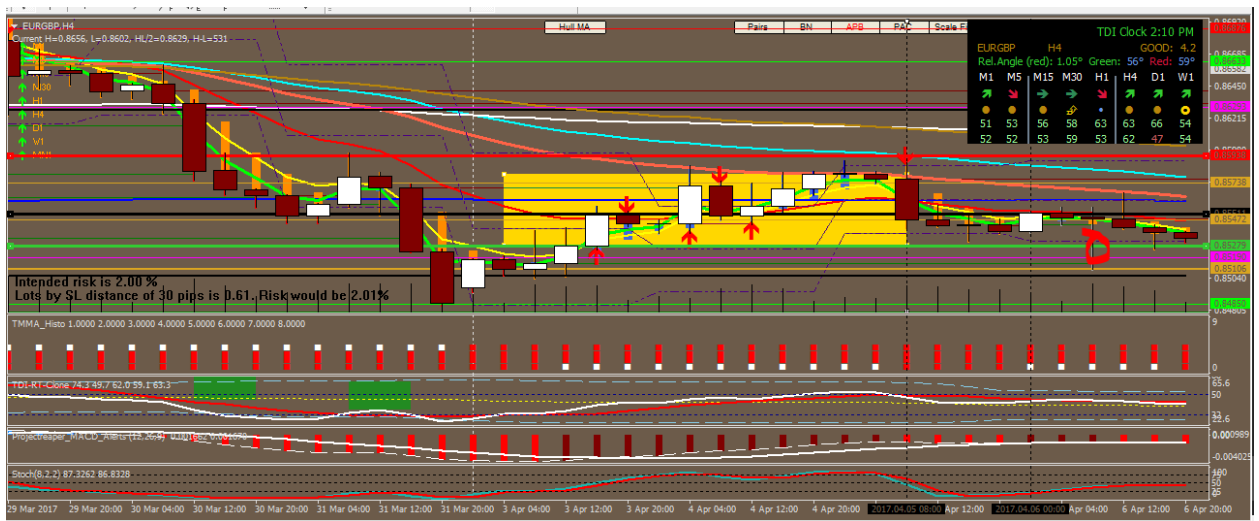
3/5 signal Let's see after .BUY



36pips

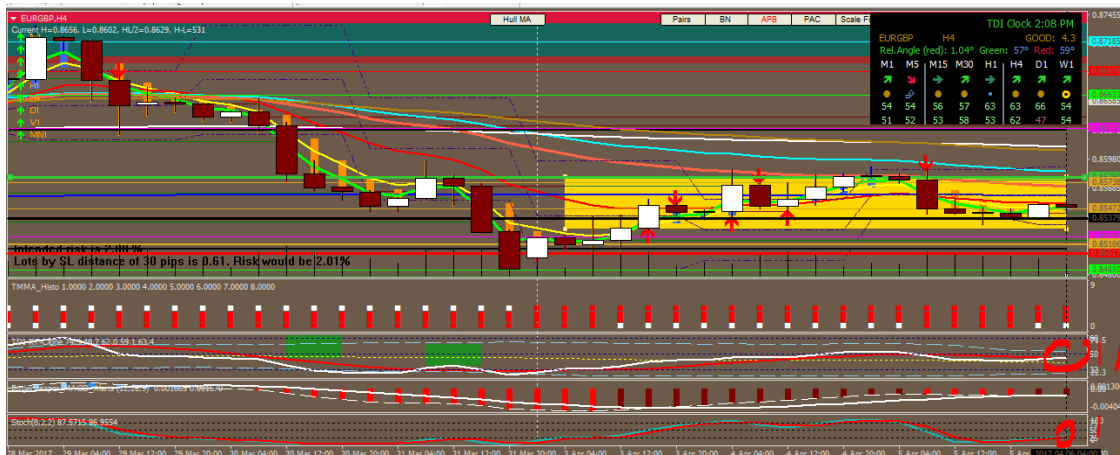


Lets see after . SELL

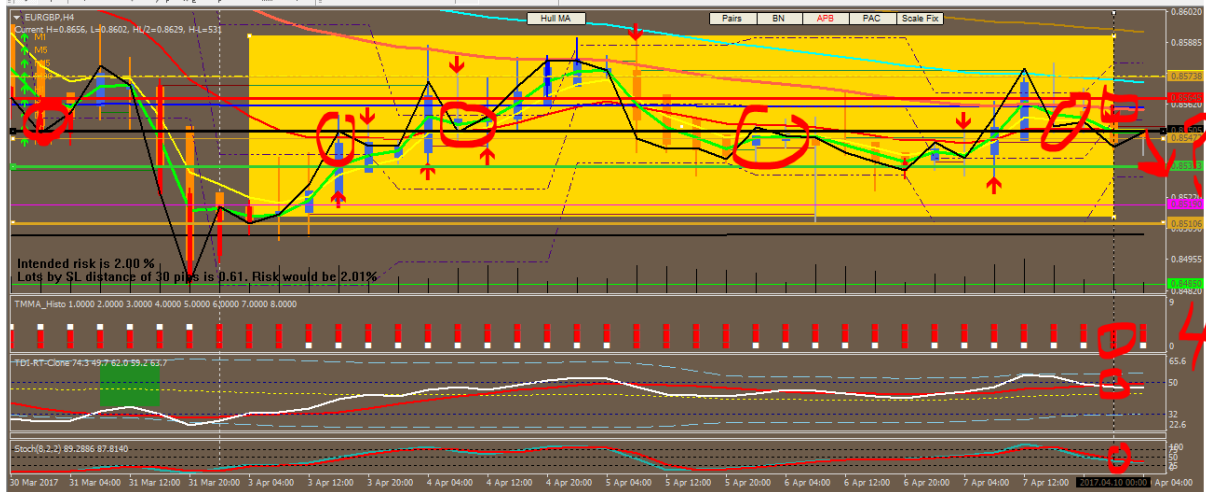


22 pips TP

BUY SIGNAL 3/5

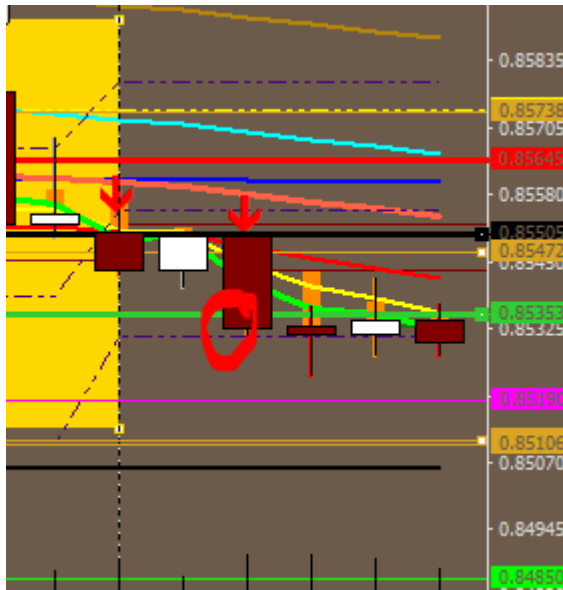


On point. TP Where the below the SNR is , 42pips .



8 4/5

SELL SIGNAL , Lets see .

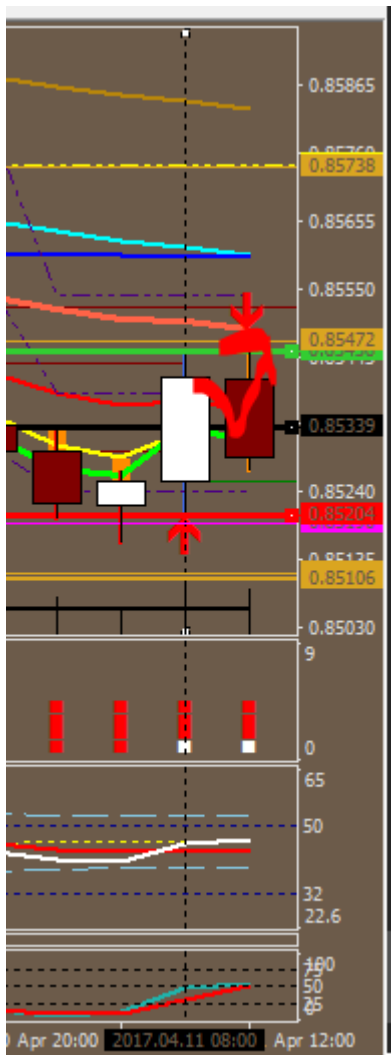


14pips done .

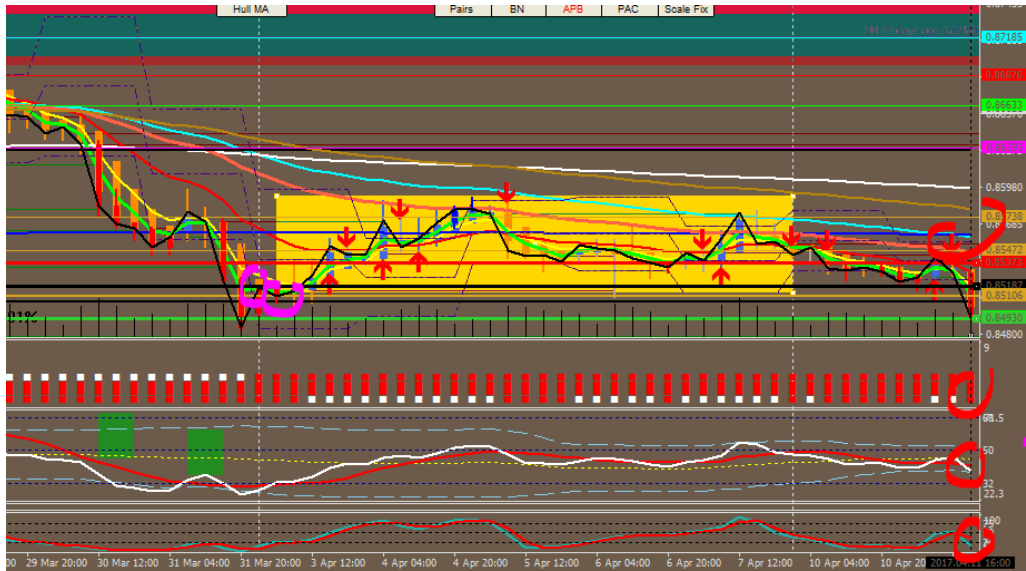


4/5

New Buy signal



TP 12pips hit.

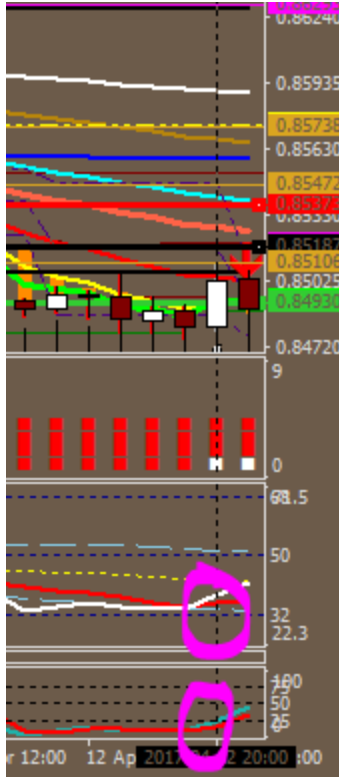


5
2 entry

SELL SIGNAL .



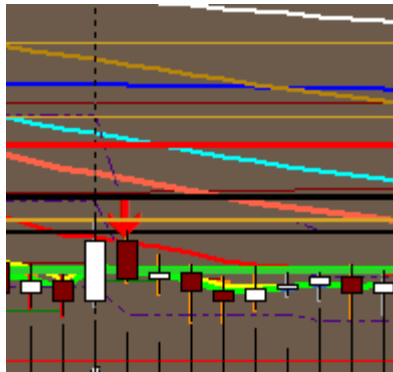
14pips done .



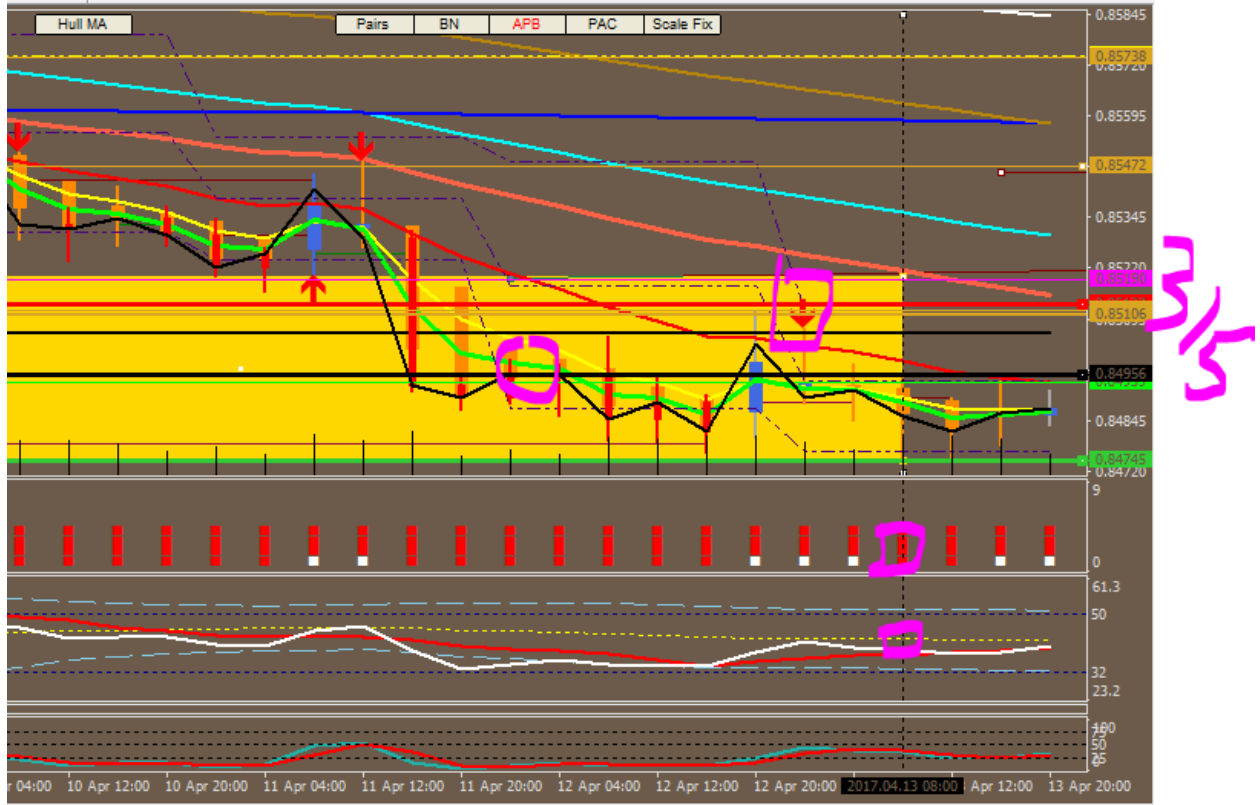
No

2/5

Looking for buy , a big no for 2/5



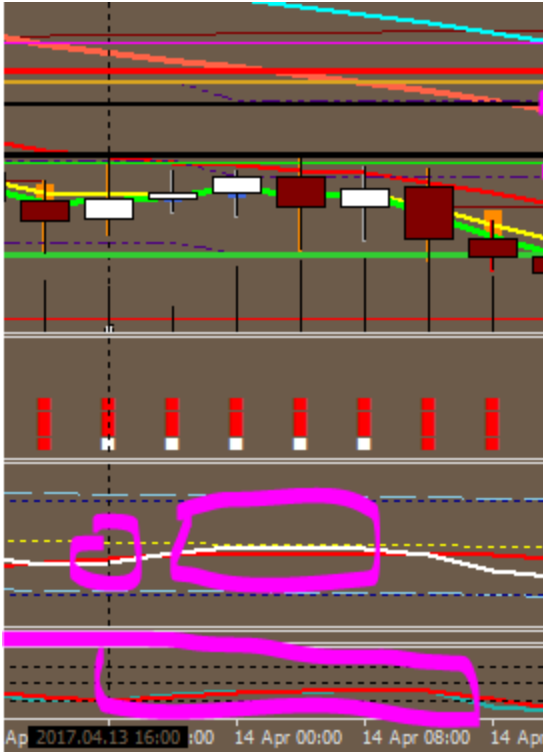
Told you . Since it was false buy , now im looking for sell.



SELL SIGNAL. Line as reference for snr . TP @ edge of box where the previous low was .



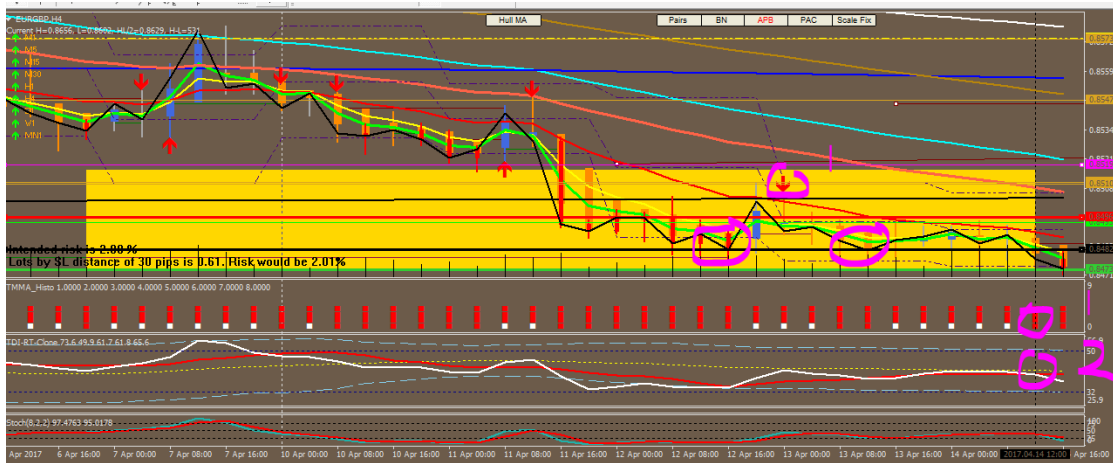
TP -ed 20pips hit .



2/5

FALSE BUY SIGNAL ALL THE WAY .

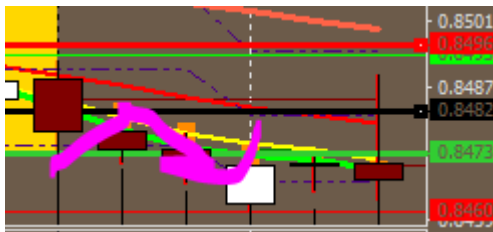
Judge this system by urself , Cheers .



4/5

82

NEW SELL .



10 pips scalped to the edge of box , safe tp . Safer than sorry .

